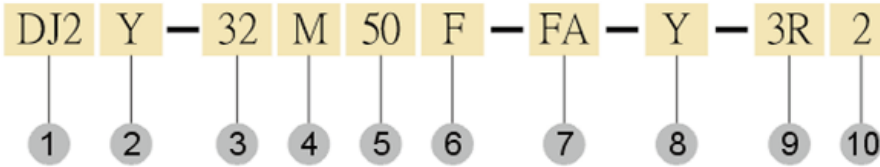


DJ2

Compact Pneumatic Cylinder

Order Codification & Standard Stroke Table



1 Type

2 Cylinder Type

Body	Type
DJ2	Standard Type
DJ2D	Double End Rod Type
DJ2Y	Single End Rod Double Acting Yoke Type
DJ2DY	Double End Rod Double Acting Yoke Type
DJ2E	Double End Rod Stroke Adjustable Type
DJ2EY	Double End Rod Stroke Adjustable Yoke Type
DJ2B	Single End Rod Backward Stroke Adjustable Type
DJ2BY	Single End Rod Backward Stroke Adjustable Yoke Type
DJ2T	Tandem Cylinder
DJ2M	Multipositional Stroke Cylinder Back To Back Multiple End Stroke Cylinder
DJ2F	Face To Face Multiple End Stroke Cylinder

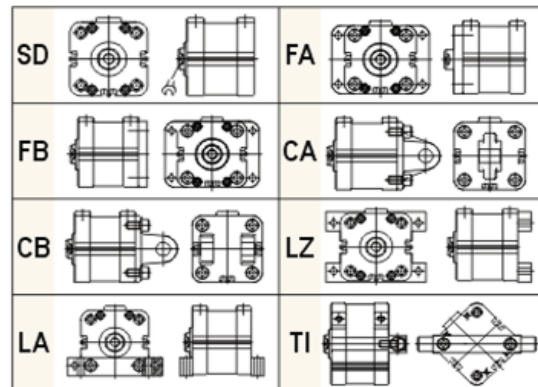
3 Bore Dia. (mm)

4 M: With Magnet N: Without Magnet

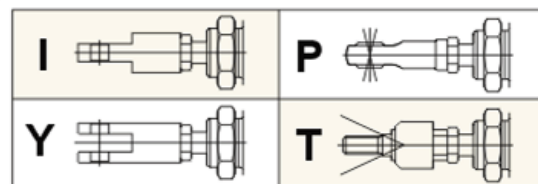
5 Stroke(ST) (mm)

6 F: Female Thread E: Male Thread

7 Mountings



8 Accessories



9 Sensor Switch Type

2R: 0-110V
3R: 0-220V

10 Sensor Switch Quantity

Bore		Standard Stroke													
		5	10	15	20	25	30	35	40	45	50	75	100	150	
φ 12	S	○	○												
	D	○	○												
φ 16	S	○	○												
	D	○	○												
φ 20	S	○	○												
	D	○	○												
φ 25	S	○	○												
	D	○	○												
φ 32	S	○	○												
	D	○	○												
φ 40	S	△	○												
	D	△	○												
φ 50	S	△	○												
	D	△	○												
φ 63	D	△	○												
φ 80	D	△	○												
φ 100	D	△	○												
φ 125	D	△	○												
φ 160	D	△	○												
φ 200	D	△	○												

※: Others on request

unit: mm



the #1 value in automation

63 Railway St Mudgeeraba Qld 4213

AUTOMATIONDIRECT

www.automationdirect.com.au | 1800-633-0405

DJ2

Standard Type Compact Pneumatic Cylinder



R & D / Manufacture / Sale / Service

DJ2



Standard Type

DJ2..M



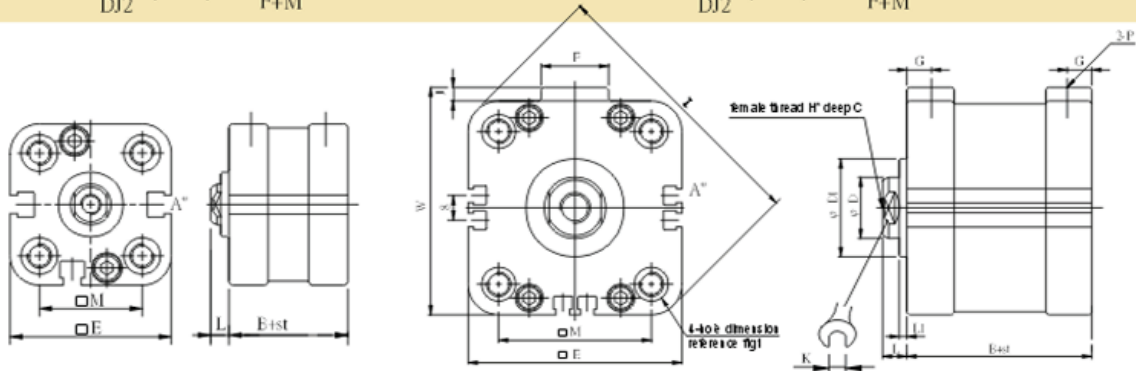
Standard Type
With Magnetic Piston



Dimension of Female thread

DJ2 $\varphi 12 \sim \varphi 25$ F
DJ2 F+M

DJ2 $\varphi 32 \sim \varphi 100$ F
DJ2 F+M

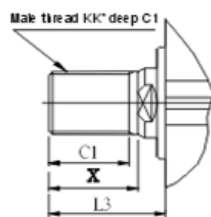


sign bore	standard	sensing	φD	$\varphi D1$	$\square E$	F	G	H* φC	I	J	K	L	L1	$\square M$	P	W
	B	B														
$\varphi 12$	17	24	6	12	28	-	5	M3*0.5*6	35	-	5	6	2	15.5	M5*0.8	-
$\varphi 16$	18.5	25.5	8	14	33	-	5.5	M4*0.7*8	41	-	6	7	2	20	M5*0.8	-
$\varphi 20$	19.5	26.5	10	16	40	-	5.5	M5*0.8*7	50	-	8	7	2	25.5	M5*0.8	-
$\varphi 25$	22.5	29.5	12	18	44	-	5.5	M6*1.0*10	56	-	10	7	2	28	M5*0.8	-
$\varphi 32$	23	30	16	26	51	20	5.5	M8*1.25*12	65	3.5	14	8.5	2.5	34	1/8	54.5
$\varphi 40$	29.5	29.5	16	28	59	20	8	M8*1.25*13	76	3.5	14	8.5	2.5	40	1/8	62.5
$\varphi 50$	30.5	30.5	20	32	70	22	9.5	M10*1.5*15	91	4.5	17	9.5	2.5	50	1/4	74.5
$\varphi 63$	36	36	20	32	83	22	10	M10*1.5*18	108	4.5	17	9.5	2.5	60	1/4	87.5
$\varphi 80$	43.5	43.5	25	36	102	26	12	M16*2.0*21	133	6.5	22	13	3	77	3/8	108.5
$\varphi 100$	53	53	25	38	122	26	13	M16*2.0*21	161	6.5	22	13	3	94	3/8	128.5

unit: mm

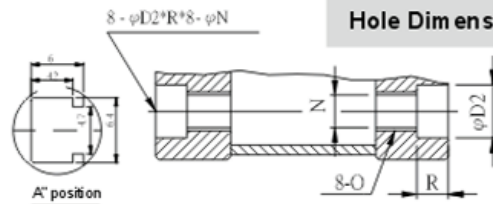
Dimension of Male thread

DJ2



sign bore	KK	C1	X	L3
$\varphi 12$	M5*0.8	9	10.5	16.5
$\varphi 16$	M6*1.0	10	12	19
$\varphi 20$	M8*1.25	12	14	21
$\varphi 25$	M10*1.25	15	17.5	24.5
$\varphi 32$	M14*1.5	20	21.5	30
$\varphi 40$	M14*1.5	20	21.5	30
$\varphi 50$	M18*1.5	23	25.5	35
$\varphi 63$	M18*1.5	23	25.5	35
$\varphi 80$	M22*1.5	30	31.5	44.5
$\varphi 100$	M22*1.5	30	31.5	44.5

Hole Dimension



sign bore	$\varphi D2^*R^*\varphi N$	O
$\varphi 12$	6*3.3*3.3	M4*0.7
$\varphi 16$	6.5*3.5*3.5	M4*0.7
$\varphi 20$	9*5.2*5.1	M6*1.0
$\varphi 25$	9*5.2*5.1	M6*1.0
$\varphi 32$	9*5.2*5.1	M6*1.0
$\varphi 40$	9*5.2*5.1	M6*1.0
$\varphi 50$	11*6.5*6.7	M8*1.25
$\varphi 63$	13*8.5*8.5	M10*1.5
$\varphi 80$	18*11*10.25	M12*1.75
$\varphi 100$	20*11*10.25	M12*1.75

ORDER BY PHONE

ORDER CDROM

ORDER ONLINE



the #1 value in automation

63 Railway St Mudgeeraba Qld 4213

AUTOMATIONDIRECT

www.automationdirect.com.au | 1800-633-0405