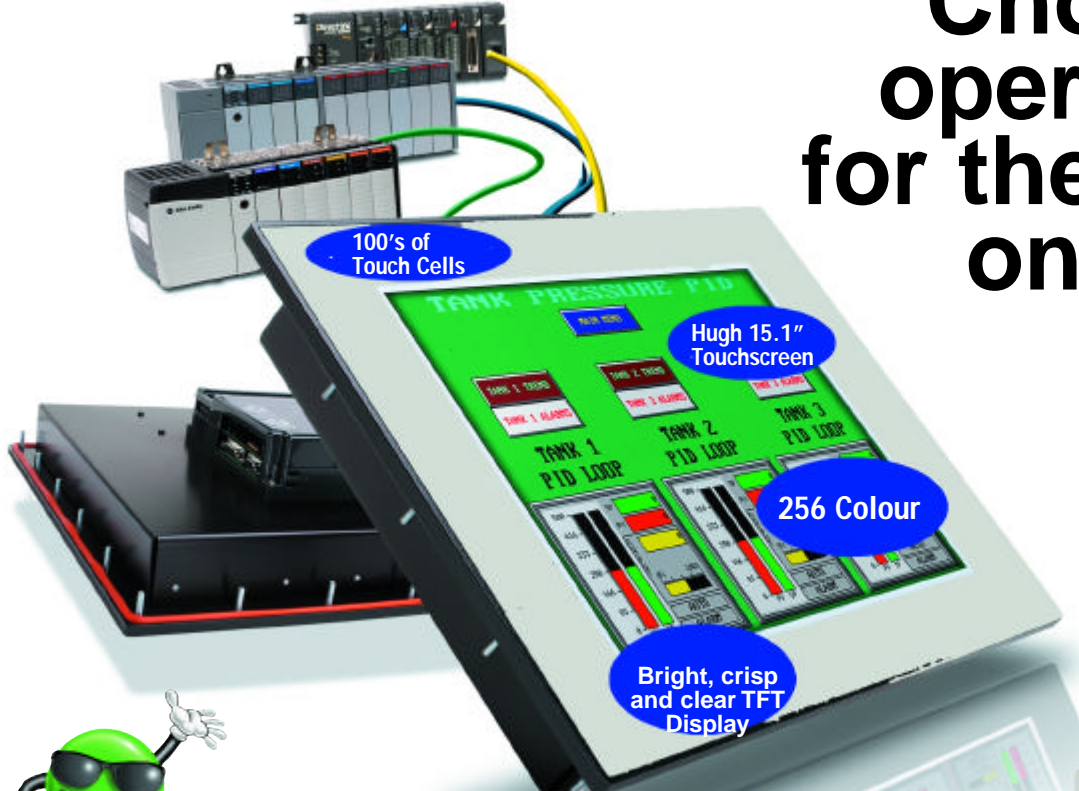


Operator Interface

TOUCH PANELS

# Choose UniOP operator panels for the best value on the market

## E-TOP



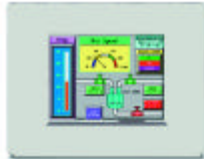
We named our panels **E-Top** because they are the easiest PLC touch panel to configure in the industry. These panels quickly connect to over 150 devices and popular PLCs, and sport ridiculously low prices.

Check out our offering and the many features and options that make **E-Top** panels the best value on the market.



### Drivers supported

- Over 150 Device Drivers supported
- Allen-Bradley DF1 (PLC-5, SLC 500, MicroLogix 1000, 1200 and 1500)
- Allen-Bradley DH-485 (SLC 500, MicroLogix 1000, 1200 and 1500)
- Modicon MODBUS RTU
- GE Fanuc SNPX (90/30, 90/70)
- Omron Host Link (C200 and C500)
- Siemens S7 MPI Adapter series PLCs
- All AutomationDirect DirectLOGIC PLCs



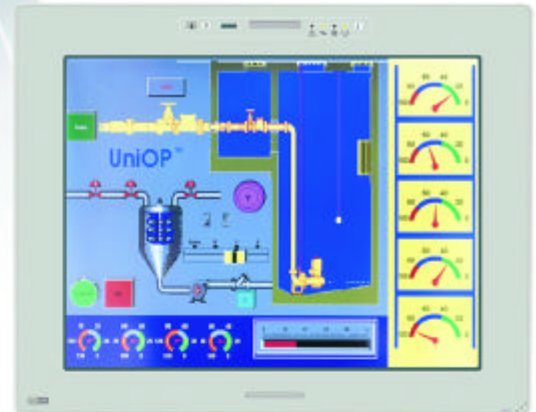
eTOP 11 5.6" Color  
320 x 240 VGA, 8mb  
\$1990



eTOP 12 5.6" LCD  
Monochrome  
\$1290



10" Color TFT  
(8 MB flash.)  
\$3,700



eTOP 50 15.1" Color TFT  
XVGA  
\$5,900



eTOP 03  
3.8" Mono LCD  
1/4 VGA 320 x 240 pixels  
\$690

1-800-633-0405

Easy to program, easy to operate— **Designer Programming Software** \$295

Download manuals to see for yourself:  
[www.automationdirect.com.au/support](http://www.automationdirect.com.au/support)

**You can create basic screens in about 10 minutes**  
Easy to program, easy to operate - Uniwin Designer  
You can create a basic screen in about 10 minutes.  
We know you have better things to do than attend a class on how to configure a touchpanel!  
UniOPs are so intuitive that in a few minutes you should be able to create great screens on your own.  
*Designer programming software lets you:*

- Click, drop and edit objects on the screen
- Copy and paste screens to and from other projects
- Have multiple instances so you compare different project files
- Scale objects to virtually any size with little or no distortion
- Enter data with a pop-up keypad
- Configure panels for multiple languages
- Use the included Symbol library, or import color bitmaps



### Coming Soon VMO10 Video Input Module

The VMO10 Video Input Module has been designed to display live video images on the UniOP screen from a camera or from a device or computer with a VGA output.

- 3 CVBS video input channels
- 1 RGB video input channel (VGA)
- Simultaneous presentation of all channels on screen
- User programmable window size
- Video frame sampling
- Video cropping
- Compatible with B-type eTOP panels



**Connect multiple panels to PLCs on Ethernet**