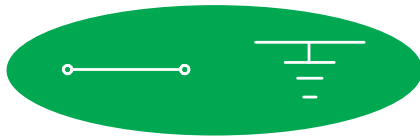


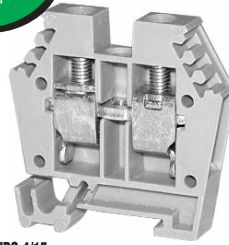
Mini Terminal Blocks



Mini terminal blocks are used in areas with extremely limited space requirements, and mount on the smaller DIN rail type DN-R15S1.

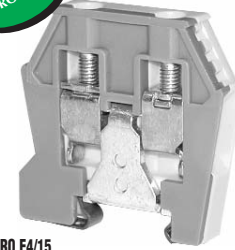
10 AWG

DN-M10
Series: EURO 4/15

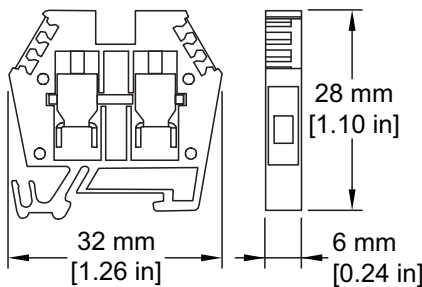


GROUND

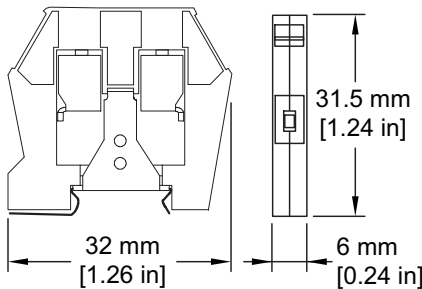
DN-MG10
Series: EURO E4/15



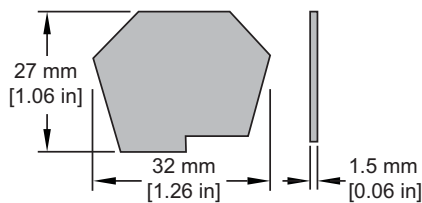
DN-M10



DN-MG10



DN-ECM10
DN-ECM10MN



	Part #	Pcs/Pkg	Price/Pkg	Part #	Pcs/Pkg	Price/Pkg
Gray Term Block	DN-M10	100	<--->	-	-	-
Blue Term Block	DN-M10B	100	<--->	-	-	-
Mini Terminal Blocks Specifications						
Green/Yellow Block	-	-	-	DN-MG10	20	<--->
UL Approval*	300V	30A	24-10AWG	-	-	18-10AWG
CSA Approval	300V	25A	18-12 AWG	-	-	18-10AWG
VDE Approval	400V	35A	4mm ²	-	-	4mm ²
CE Conformity	CE 23/20, CE 23/21			CE 23/20, CE 23/21		
Agency File #	E179129, LR84816			E179129, LR84816		
Wire Strip Length	0.39" (10mm)			0.39" (10mm)		
Tightening Torque	5.5 lb-in. (0.6Nm)			5.5 lb-in. (0.6Nm)		
Density	43 pcs./ft. (142/m)			50 pcs./ft. (166/m)		
Operating Temperature	Ambient air temperature: -13°F to 104°F (-25°C to 40°C) Relative humidity: 50% max at 104°F (40°C); 90% max at 68°F (20°C)					
<i>*Note: For copper wire only</i>						

Accessories						
	Part #	Pcs/Pkg	Price/Pkg	Part #	Pcs/Pkg	Price/Pkg
DIN Rail (15 mm)	DN-R15S1				10	<--->
End Bracket	DN-EB15	100	<--->	-	-	-
	DN-EB15MN	20	<--->	-	-	-
End Cover	DN-ECM10	100	<--->	-	-	-
	DN-ECM10MN	25	<--->	-	-	-
Jumpers	/ 2 Pole	DN-2JM10	100	<--->	-	-
	/ 3 Pole	DN-3JM10	100	<--->	-	-
	/ 4 Pole	DN-4JM10	100	<--->	-	-
	/ Multi-pole	DN-82JM10 82 pole	1	<--->	-	-
Marking Tags	DN-LT series				100	<--->
Angled Support Bracket	DN-ASB1	50	<--->	DN-ASB1	50	<--->
Top Cover	DN-MC10	100	<--->	-	-	-

For more information on accessories, see the "DINnectors Accessories" section of this chapter.

- Company Info.
- PLCs
- Field I/O
- Software
- C-more & other HMI
- AC Drives
- AC Motors
- Power Transmiss.
- Steppers/Servos
- Motor Controls
- Proximity Sensors
- Photo Sensors
- Limit Switches
- Encoders
- Current Sensors
- Pressure Sensors
- Temp. Sensors
- Pushbuttons/Lights
- Process
- Relays/Timers
- Comm.
- Terminal Blocks & Wiring
- Power
- Circuit Protection
- Enclosures
- Tools
- Pneumatics
- Appendix
- Part Index